

ID TECHNOLOGY MODEL 250 INTEGRATED CORNER LABELING SYSTEM

"LABELING, CODING AND MARKING SPECIALISTS."



- Integrated Standard IDT Components
- Stainless Steel Construction
- Model 250 Label Printer Applicator
- Optional Touch Screen Interface

ID Technology has produced a standard labeling system to print and apply variable information labels to the trailing corner of cases and cartons. This system utilizes standard "off-the-shelf" IDT components to construct a custom system.

The IDT integrated conveyor is made of stainless steel construction with a variable speed DC drive Baldor motor. Its integrated base has locking feet and casters allowing easy relocation of the entire system. An IDT TS1000 Vertical Post and IDT TS3000 Slide Base Assembly can be mounted to the conveyor beam, enabling X and Y axis movement of the applicator.

A model 250 Label Printer Applicator prints and applies variable information labels to the side of cartons. A standard IDT secondary tamp is used to tamp the label onto the side of the carton and wipe it around the trailing edge corner. An IDT System Scanner Interface verifies the barcode and either lets the case continue down the line or rejects it via the IDT reject station.



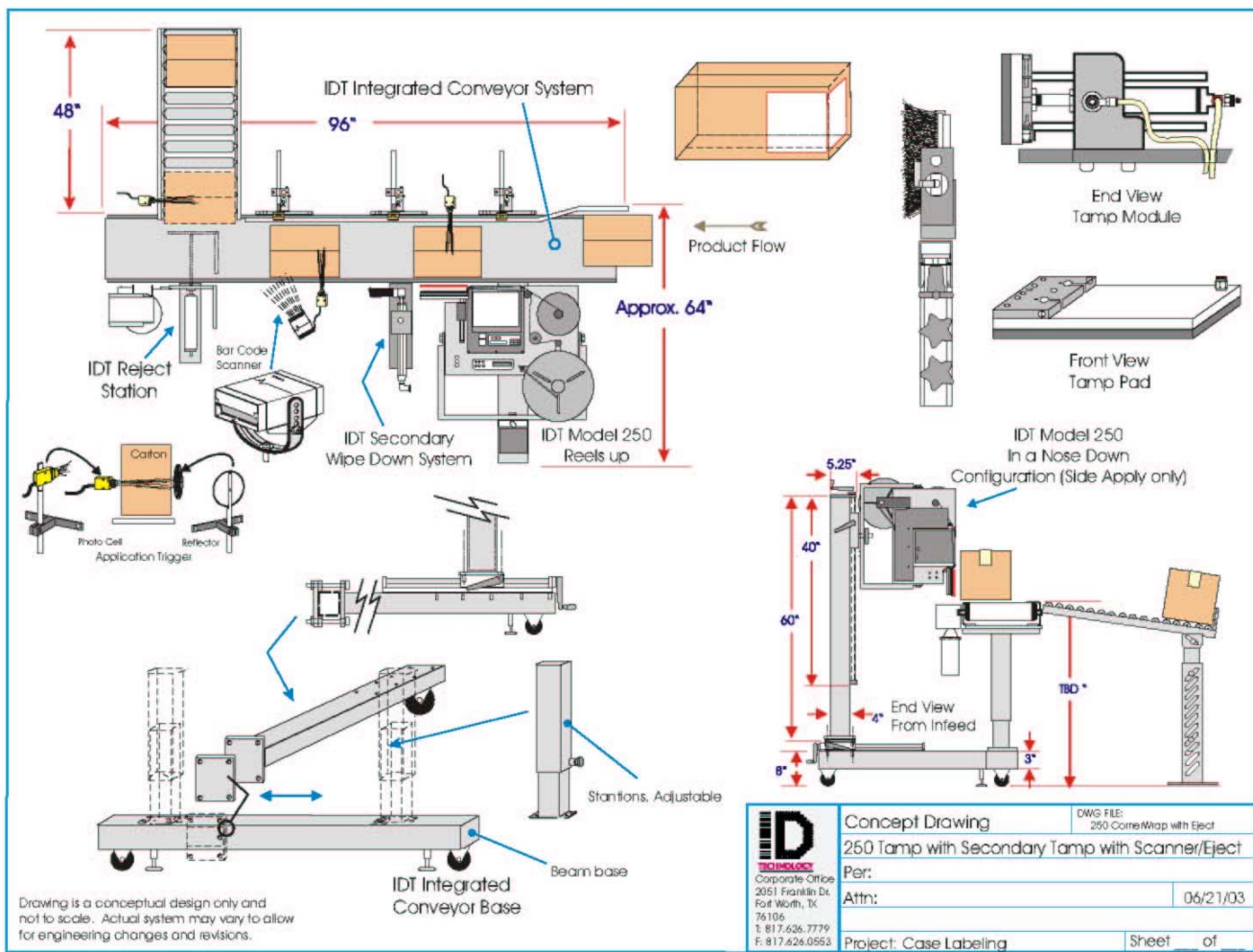


028457



ID TECHNOLOGY MODEL 250 INTEGRATED CORNER LABELING SYSTEM

"LABELING, CODING AND MARKING SPECIALISTS."



2051 Franklin Drive
Fort Worth, TX 76106
888.438.3242
www.idtechnology.com