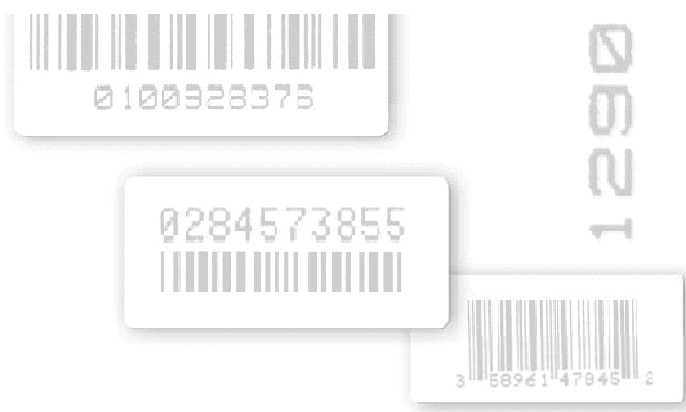


ID TECHNOLOGY OPERATOR INTERFACE FOR MODEL 250 SYSTEMS

"LABELING, CODING AND MARKING SPECIALISTS."



- Touch Screen Interface
- Startup Tone
- Flashing Screen Error Notification

The ID Technology operator interface is designed with custom touch screen controls. This interface was originally designed for a corner wrap system with a reject station, but can be adapted to fit most IDT systems.

The touch screen can control the startup and shut down of the entire system or each component individually. Using this interface the operator can set the product delay of the printer applicator, alert the operator of applicator status and enable or disable the shut down option for when the applicator is offline.

There are two controls for the secondary wipe. The operator can enable or disable the wipe and specify the delay and dwell settings.

Also with the interface, the operator can enable or disable a scanner. If the scanner is on, the operator has a choice of enabling or disabling consecutive scanner "no reads" to trigger a system shutdown.

The on, off, delay and dwell, settings for the reject mechanism can all be defined from this interface. The operator can choose to enable or disable the system shutdown command for when the reject conveyor is full. The amount of time that the photocell must be covered before the system shut down is triggered is also set through the interface.

The need to set delays on each individual component is now eliminated and can be done easily in one place, with the IDT Operator Interface.

