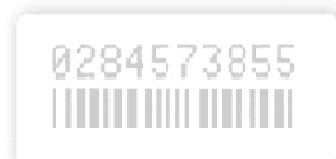
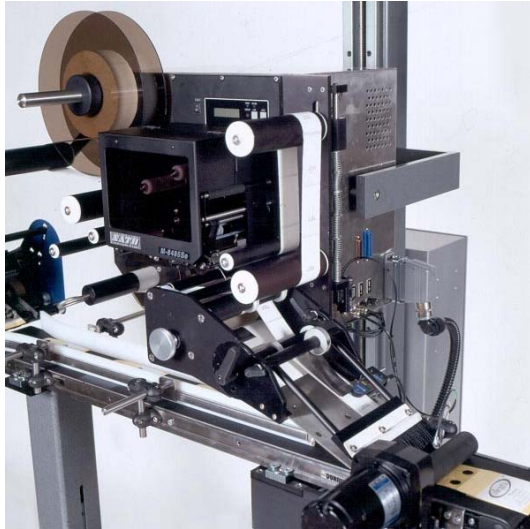


ID TECHNOLOGY LL4000 LOOSE-LOOP PRINT & APPLY SYSTEM



1290

"LABELING, CODING AND MARKING SPECIALISTS."



- Speeds to 12"/sec
- Less downtime
- True Synchronous Application

The ID Technology LL4000 uses print and apply technology for applications that would normally require a decorative label applicator with pre-printed labels. With the LL4000, the web application speed can reach 18 IPS vs. 12 IPS with traditional non-loose loop print and apply systems. Partially printed "shell" or blank labels can be used to eliminate the need for stocking pre-printed decorative labels. This reduces label roll changes as products are changed and therefore production downtime is reduced.

The LL4000 was designed from the ground up as a high-speed loose loop print and apply system. The design is compact with a short web path between the printer and label application device. In turn, this applicator reduces label waste when changing copy and shortens downtime when changing label rolls.

The label printer applicator uses a true synchronous label application method, which is normally only available with decorative label applicators. This method allows for more control of the label, which eliminates bubbles and improves application accuracy.

The LL4000 was designed for use with industrial OEM version print engines: Sato, Zebra or Datamax. The OEM print engines are built for continuous duty, 24/7 operation. Most other loose systems use low cost, light duty desktop printers that are designed for lower volume label printing.



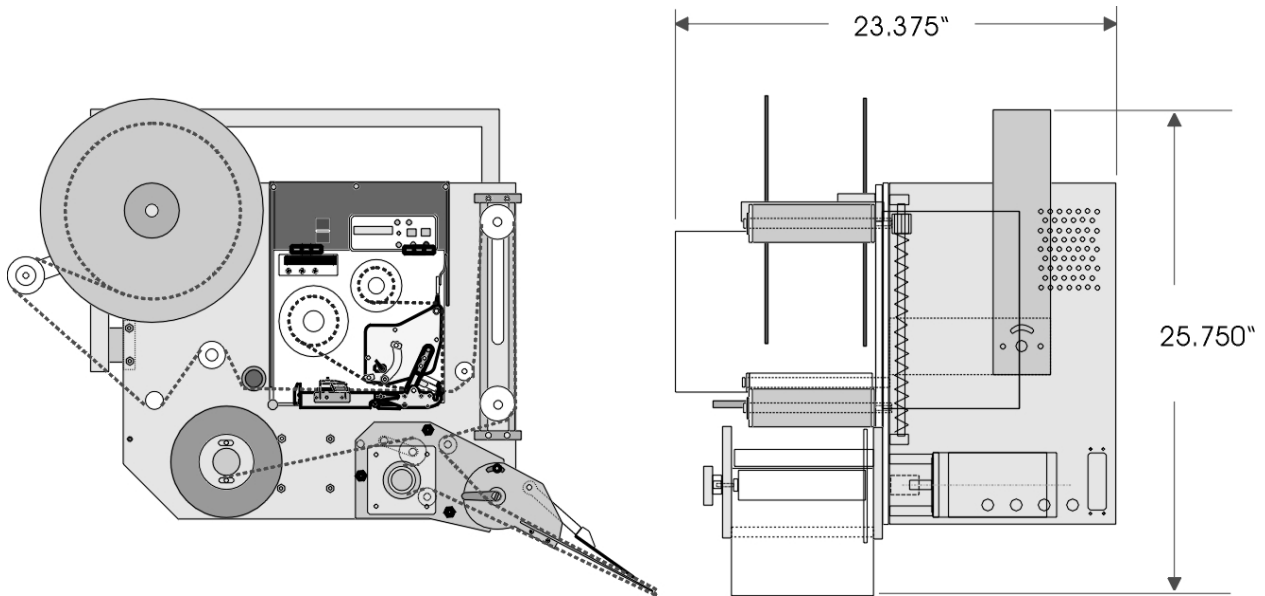


028457



ID TECHNOLOGY LL4000 LOOSE-LOOP PRINT & APPLY SYSTEM

"LABELING, CODING AND MARKING SPECIALISTS."



2051 Franklin Drive
Fort Worth, TX 76106
888.438.3242
www.idtechnology.com