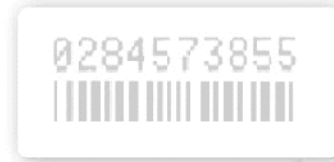


ID TECHNOLOGY CONVEYOR FOR FOUR-SIDED PRINTING

"LABELING, CODING AND MARKING SPECIALISTS."



12910



- Print on 4 Sides
- Clear, Crisp Barcodes
- Modular Design
- Variety of Options

ID Technology engineers have designed an adjustable conveyor that steers cartons through a four-sided printing process. Four high-resolution printheads are mounted to the conveyor, two per side. The product passes the first set of printheads, then is turned a full 90° to allow for printing on the remaining two sides. The result is crisp clear text and barcodes on each side of a box using one conveyor.

The conveyor is available in various widths and lengths with a choice of motor speeds, adjustable floor supports and a selection of belt textures. Optional scanners, verifiers and reject stations can also be added.

The modular support bases can also be used for mounting other types of inkjet printheads as well as label applicators.

